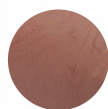


# HUGE



**1ST**

dark pink with lighter hue



**3S**

dark pink with darker hue



## VIVID NATURAL ESTHETICS

# New Launches of Dark Pink Shades for Denture Base Polymers

Two dark pink shades of denture base polymers have been newly released! Different from the common shades, the new two shades are specially developed for patients of dark skin to achieve a more natural match to their appearance. Quality and property performance is as excellent as that of the other shades.



GLOBAL DENTAL SUPPLIER

# Dark Pink Shades for Denture Base Polymers



## Benefits

- Vivid natural outlook
- Drop-resistant
- Shrink-resistant
- Dissolve-resistant
- No bubbles
- Cadmium-free and safe

## Application

Applied to make denture bases in full denture, partial denture as well as implant-support denture restorations.

## Technical features

Type	Mixing ratio	Mixing time	Dough time	Working time	Curing time
Traditional Heat Curing	1ml : 2.34g	1-2 min	15-20 min	8-14 min	90 min
Fast Heat Curing	1ml : 2.4g	1-2 min	14-20 min	8-14 min	20 min
Self Curing	1ml : 2.2g	0.5 min	12-14 min	5-6 min	30 min

## Shades description



**1ST** dark pink with lighter hue



**3S** dark pink with darker hue

Packaging*	Description
Powder	1000g/box, including 10 small bags
	1000g/can, including 1 big bag
Liquid	500ml/bottle



\* Only standard packages are described here, more packages available are as follows:  
for powder: 50kg/drum; for liquid: 250ml, 5L, 20L.



## Shandong Huge Dental Material Corporation

Add / No.68 Shanhai Road, Donggang District, Rizhao City, Shandong Province, 276800, P.R. China.  
Tel / +86 (633) 2277268 marketing@hugedental.com www.hugedental.com

Facebook Huge Dental

Instagram Huge Dental

Youtube Huge Dental