

About

VinciSmile Group LLC is a worldwide dental supplier headquartered in Los Angeles, California USA. We offer a wide range of dental lab and clinical solutions, including NOBIL-DENT Resin Teeth, NOBILCAM CAD/CAM Materials, NOBILTRAY Lab Materials, PERFIT Elastomeric Impression Materials, Clinical Restorative Materials, and Invisible Orthodontic Appliance, etc.

Our company is committed to providing exceptional support services, offering comprehensive counseling and training for employees, agents, and customers. As an FDA-registered facility, we adhere to strict production quality assurance standards and maintain ISO 13485 certification.

VinciSmile®

- Versatile Cementation Options
- Simplified Restoration Workflow
- Reliable High-esthetics Results



TopCEM

Indirect Restorative Solutions

A fully aligned and all-round system designed to simplify your dental success



VINCISMILE GROUP LLC

Add: 20524 Carrey Rd. Walnut, CA 91789, USA

Email: marketing@vincismile.com Tel: +1 626 283 5808

Web: www.vincismile.com Shop with us online at store.vincismile.com


Follow @VinciSmile

With indirect dental restorations, the fabrication occurs outside of the mouth. Examples include veneers, crowns, bridges, implants, inlays, and onlays. Although the procedures require more work (such as a dental impression, tooth preparation, fabrication, and a temporary veneer, bridge, or crown), they offer restoration options for larger areas of damage and decay.

Furthermore, indirect restorations can be used to correct a number of cosmetic concerns, increase the aesthetic appearance of your teeth or provide a more stable, longer-lasting solution when the damage is severe or extensive.

VinciSmile offers you a fully aligned and all-round system designed to simplify indirect restoration workflow and elevate your success in dental practice.



VinciSmile TopCEM Indirect Restorative Solutions

1



Dental Impression

2



Restoration Selection

3



Pre-treatment

4



Adhesive Application

5



Cementation

6



Protection



Dental Impression

2

Restoration Selection

3

Pre-treatment

4

Adhesive Application

5

Cementation

6

Protection

Impression taking, as the very first step in indirect restorative workflow, holds the key to a successful restoration result. As digital dentistry is underway, digital scanning is the better choice for clinicians.

Digital denture workflows offer benefits from digital scanning accuracy, which enables technicians to create dentures with better fit and retention. Faster fabrication speed and fewer dental visits — creating digital prostheses can be done faster than traditional ones.

Intraoral scanning, as the very first step in full digital workflow, helps improve patient care and takes dental clinics to the next level.

i-Vinci Smart Intraoral Scanner

SUPERIOR CHOICE FOR DIGITAL DENTAL SOLUTION



i-Vinci Software Highlights

- Undercut area analysis
- Align
- Distance calculation
- Lock area

• SMALLER AND LIGHTER

138g only
 40% lighter than i-Vinci 3
 221×27×25 mm
 Pen-shaped Design

• FASTER AND MORE ACCURATE

1 Minute Ultra-fast Scanning Speed
 7 μm Ultimate-high Accuracy

• BETTER EXPERIENCE

Ergonomic pen-shaped design fits easily in hand.
 Turbo fan system ensures muteness during scanning.

- Can be utilized for multiple applications: restorations, orthodontics, implants, dentures.
- Staring 3D coded light structure scanning technology ensures high-speed and anti-shaking performance.
- AI technology makes you enjoy the smart experience and smooth scanning.
- Turbo fan cooling system enables muteness in scanning process, providing a better patient experience.
- Clear cervical margin, vivid color and high precision.
- Portable and micro device, easy to operate.

PERFIT Heavy Body & Light Body Fast Set

PERFIT is a polyvinylsiloxane impression material which is:

- Available in 4 viscosities: Heavy, Regular, Light, and Putty
- Fast setting: sets in 3 minutes intraorally
- Used to make final impressions for all indirect restorative procedures, including: crown, bridge, inlays and onlays, implantology, orthodontics, removable appliances



23 CLINICAL EVALUATORS

215 TOTAL USES

88% CLINICAL RATING

Specific Applications Solutions:

Compared with traditional two-step impression technique, Heavy Body&Light body benefits from its simple operation and excellent dimensional stability. We recommend it to be used as an impression tool for implant restoration and full denture restoration.

Technical Parameter	Heavy Body /Dispenser Mix -Fast Set	Heavy Body /Auto Mix -Fast Set	Light Body -Fast Set
Total Working Time (Temperature:23°C, Humidity:50%)	1min30s	1min30s	1min30s
Setting Time in oral cavity	3min	3min	2min30s
Elastic recovery	>99.5%	>99.5%	>99.5%
Dimensional change rate	< 0.2%	< 0.2%	< 0.2%
Hardness Shore A	≈68	≈68	≈56

1

Dental Impression

2

Restoration Selection

3

Pre-treatment

4

Adhesive Application

5

Cementation

6

Protection

Temporary Restorations

NOBILCAM®

Monolayer/ Multilayer PMMA BLOCK

More than a temporary material

Product Highlights

- Seamless Gradient, natural and artistic.
- Easy to operate, stable and efficient, Excellent bio-compatibility.
- Not only for temporary crowns and bridges. but also for removable structures for dentures.

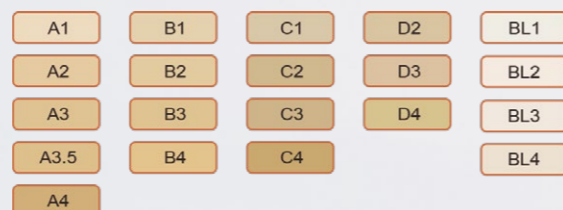


Technical Data

Properties	Parameter
Flexural strength	>120 Mpa
Modulus of Elasticity	>2200Mpa
Water Absorption	<20µg / mm ³
Water Solubility	<0.8µg/mm ³

Shades & Dimensions

· 16A-D, 2M2, BL, BL1, BL2, BL3, BL4



Fixed Restorations

- Dental crowns are caps that cover a tooth or a dental implant. Dentists often recommend crowns as a way to support broken, weak, or misshapen teeth.
- When it comes to the materials that crowns are made of, you have several possible options, including glass ceramic metal, zirconia, etc. Crowns made of zirconia are becoming increasingly common due to its advantages.

NOBILCAM®

Gradient Multilayer -3D Zirconia Block



Product Highlights

- Gradient Multilayer in 3 Dimensions: shade, strength and translucency.
- The special filling technology allows NOBILCAM GM-3D Zirconia to offer seamless transition from dentin to enamel.
- Optimally combine the raw 4Y and 5Y zirconia materials, ensuring outstanding accuracy of fit after sintering.
- Excellent incisal translucency improve the aesthetics of restorations.

Technical Data

Properties	Parameter
Flexural strength	>120 Mpa
Modulus of Elasticity	>2200Mpa
Water Absorption	<20µg / mm ³
Water Solubility	<0.8µg/mm ³

Shades & Dimensions



1



Dental Impression

2



Restoration Selection

3



Pre-treatment

4



Adhesive Application

5



Cementation

6



Protection

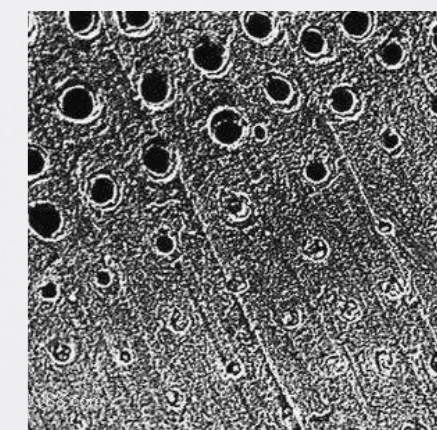
A thorough pre-treatment, which includes cleaning, etching, drying steps, can lead to dramatic changes in practice of direct restorations.

Acid etching is routinely used to etch and roughen dental surfaces, and produce a rough irregular surface with large surface areas. Pre-treatment step effectively enhances bonding strength and the retention of composite restoratives.

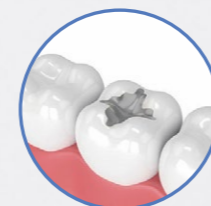
P-Etchant Phosphoric Acid Etching Gel

37% concentration for strong bond

- Eliminate the surface dirt and fouling from enamel and dentin
- Roughen the enamel and dentin surface effectively.
- Fully open dentine tubules, which is easier for adhesive to penetrate and form resin protrusion.
- Bright blue color can be easily differentiated from the tooth.
- Consistent material thickness ensures simple and effective application.
- It rinses perfectly, as it rinses off easily without leaving residue.
- Ideal viscosity, which makes precision placement easier and superior control.



Etching Techniques



Self-etch
(No phosphoric acid)



Selective etch
(Phosphoric acid on
enamel only)



Total etch
(Phosphoric acid on
enamel and dentin)

- Self-etch: Take away some of the technique sensitivity of etching dentin with phosphoric acid.
- Selective-etch: Allow a deep acid etch on the enamel margins while maintaining the benefits of a self-etch product, including low postoperative sensitivity and moisture tolerance on dentin.
- Total-etch: Ensure a thorough etch pattern on the surface of the enamel and the removal of the smear layer on dentin.

1



Dental Impression

2



Restoration Selection

3



Pre-treatment

4



Adhesive Application

5



Cementation

6



Protection

Hydrofluoric Acid

· Which is used to etch the internal surface of the ceramic restoration. This acid increases surface relief in micromechanical bonding of resin cement to ceramic restoration. Pre-treatment conditioning with HF in feldspathic ceramic and leucite reinforced glass-ceramic will result in an internal surface with white-opaque appearance.

Silane Coupling Agents

· Which are used to promote adhesion between dissimilar materials. They are good at promoting adhesion in silica-based materials such as porcelain, non-silica-based restorative materials such as zirconia, metals and metal alloys as well.

· A solution to this problem may be surface conditioning of the restorative materials. Currently, a widely used surface-conditioning method in dentistry is tribochemical silica coating. After this treatment, a silica layer is formed on the surface so that the silane coupling agent can react chemically to form a durable bond with non-silica-based materials.

TopCEM Ceramic Primer

Ceramic Coupling Agent

· Suitable for a variety of restoration interfaces, including glass ceramics (feldspar ceramics, leucite ceramics, lithium disilicate ceramics, fluoroapatite ceramics, zirconia-enhanced lithium silicate glass ceramics, etc.), oxide all-ceramics (Zirconium oxide, alumina), metal/alloy, etc.;

· Simple operation, easy to apply, compatible with light curing or dual curing resin adhesive

· Significantly improve the bonding strength between the resin cement and the restoration

HF-Etchant Hydrofluoric Acid Etching Gel

9% concentration

· Used for etching pretreatment of restoration adhesion surface made of glass ceramics, such as Changbai stone, leucite ceramics, lithium disilicate ceramics, fluorapatite ceramics, zirconia enhanced lithium silicate glass ceramics and so on.

· It makes the restoration surface more rough and improved adhesion

· It enhances mechanical interlocking force.



1

Dental Impression

2

Restoration Selection

3

Pre-treatment

4

Adhesive Application

5

Cementation

6

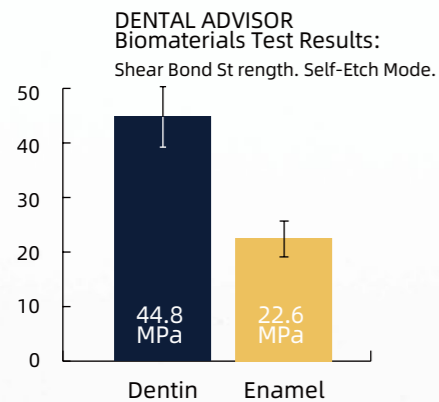
Protection

Adhesive offers additional strong bonds to the final direct restoration. There are too many options to choose, but universal adhesive is the top recommendation.

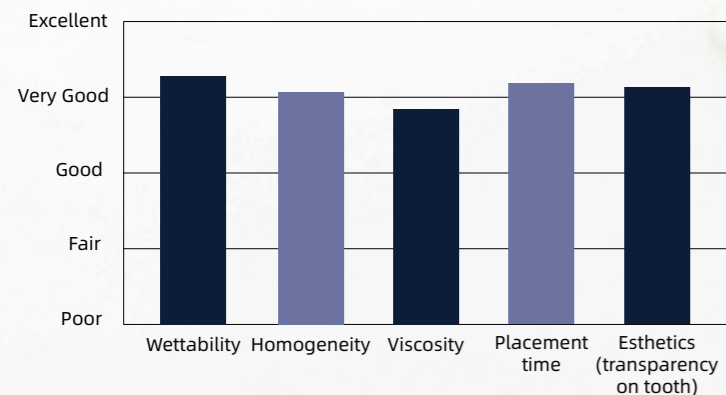
Simple, Efficient, Versatile.....

Universal adhesive is the latest innovation with one-bottle technique and more reliable bonding strength. With no need for a separate primer and complicated bonding process, universal adhesive maximizes efficiency in practice, at the same time, the product stock amount is cut down.* Reliable bonds and stability are the reasons for the choice as well. Featuring stronger and long-lasting bonding result, universal adhesive is compatible with multiple substrates in both direct and indirect restorations.

* Ceramic Primer is needed for glass-ceramic restorations.



Evaluation Summary:



*Data from Dental Advisor



27 CLINICAL EVALUATORS
 660 TOTAL USES
 86% CLINICAL RATING

HugeBond Universal

A light-cured, single-component universal bonding agent which is:

- Used in self-etch, total-etch and selective-etch procedures
- Compatible with light-cured, dual-cured, and self-cured cements
- Reliable for bonding direct and indirect restorations
- Formulated with MDP monomer that enhances chemical adhesion to direct and indirect restorations such as dentin, enamel, composite, metal, and zirconia

HugeBond Universal



HugeBond Universal

New HugeBond Universal FliPro coming soon * Upgrade to the new FLIP-OPEN cap for easier application and accurate amount control.



HugeBond Universal FliPro

EASY TO USE WITH MANY INDICATIONS

Evaluators' Comments

“The ability to use a single bonding material for all styles and types of composites is very nice.”
 “The viscosity was thicker than most agents. I felt I had great coverage.”
 “The bottle design made it easy to get the amount you needed. Some bottle designs dispense more than what you need or want.”
 “Great consistency and clinical usability.”

1

Dental Impression

2

Restoration Selection

3

Pre-treatment

4

Adhesive Application

5

Cementation

6

Protection

The cementation procedure is considered to be the most important stage of fixed prosthodontics, while the correct selection of cement is the guarantee of successful restoration which is conditioned by its durability. Over the recent years, numerous cementing substances have been introduced to the dental practice that differ greatly from conventional cements with their properties and application methods and that is why even experienced dentists often have certain difficulties in the variety of cements to choose the one that is right for each clinical case.

The selection of cement depends on a number of factors, such as the type of restoration substance, the shape of prepared tooth, the possibility to isolate the area, subject to cementation in the oral cavity as well as the patient's esthetic requirements.

VinciSmile, as an all-rounder clinical solution provider, motivated by the innovation, creates 4 kinds of cements - TopCEM cement system to empower clinics in practice.



Cement Selection Guidelines

	TopCEM Dual Cure Resin Cement*	TopCEM Vigor SA Self-Adhesive Resin Cement	TopCEM Veneer Cement	TopCEM Resin Modified Glass Ionomer Cement
Crowns	++	++	-	++
Inlays, onlays	++	+	-	+
Veneers	+	-	++	-

++ Highly recommended + Recommended - Not indicated

TopCEM Dual Cure Resin Cement, combined with HugeBond Universal/ Universal FliPro Adhesive, provides an impressive bonding result. TopCEM DCRC and HugeBond Universal deliver a fully aligned bonding system which streamlines practice and simplifies bonding workflows effectively.

Bonding Strength	★★★★★	★★★★★	★★★★★	★★★★
Moisture Tolerance	★★★★	★★★★	★★★★	★★★★★
Esthetics	★★★★★	★★★★★	★★★★★	★★★★

1



Dental Impression

2



Restoration Selection

3



Pre-treatment

4



Adhesive Application

5



Cementation

6



Protection

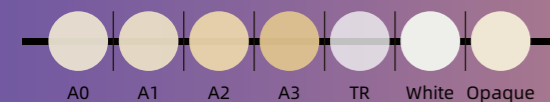
TopCEM Dual Cure Resin Cement

Universal compatibility

Product Highlights

- Dual cure feature offers flexible options
- High flexural strength of over 100 MPa
- Low film thickness, solubility and water absorption
- 3 opacity and 7 shades available, meet individual esthetic needs
- Over 400% radiopacity

Shade Selection



TopCEM Vigor SA Self-Adhesive Resin Cement

High efficiency and Reliability

Product Highlights

- Provides a time-saving one-step cementation solution, no need of adhesive
- Ultra-low film thickness about 8µm, ensures strong luting result
- High flexural strength over 100Mpa
- Low water absorption and solubility, delivers a long-lasting restorative result.
- Perfect viscosity for accurate placement, without runny mess in patients mouth
- 7 shades and 3 opacities provide esthetics tooth-like restorative result.

TopCEM-Veneer

Light Cure Veneer Cement

Product Highlights

- 5 shades and 3 opacity options, satisfy all needs of esthetics, high translucency and shades covering
- Light curing ensures colour stability
- Impressive radiopacity, X-ray radiation resistance could be over 400%
- High bonding strength, low water absorption and solubility, and impressive marginal fitness
- Additional try-in gel ensures appropriate cement shade to fit in natural teeth



TopCEM-RMGI

Resin Modified Glass Ionomer Cement-Luting

Product Highlights

- Self-adhesive luting cement
- Higher bond, compressive and flexural strengths
- Low film thickness
- Quick cleanup, easily remove excess cement with one clean sweep
- Auto-mix delivery makes it simple to handle for a streamlined routine

1

Dental Impression

2

Restoration Selection

3

Pre-treatment

4

Adhesive Application

5

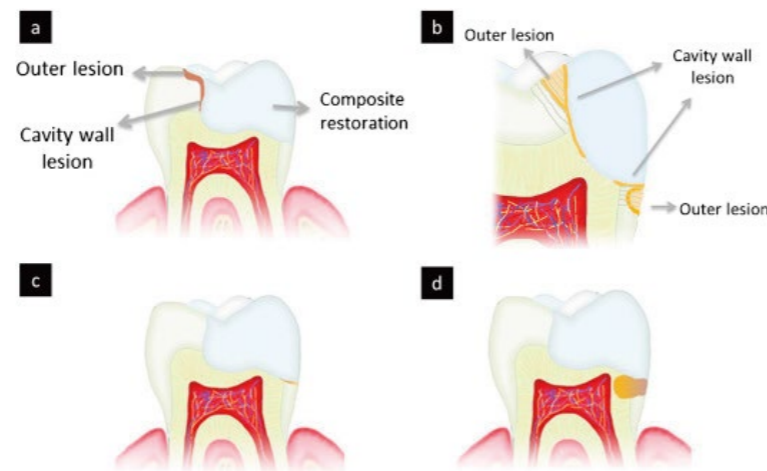
Cementation

6

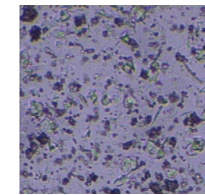
Protection

There is a much greater chance that secondary caries occur to the patient who have had a cavity before. Secondary caries mainly occurs because of the formation of micro cracks after filling. When the micro crack width exceeds 50 micron, saliva will enter the micro cracks between the filling and tooth tissue. The cariogenic bacteria in the saliva will grow when the environment of micro cracks is appropriate, thereby producing secondary caries. Secondary caries is the main reason for the replacement of dental restorations, which means the failure of the restoration in some way.

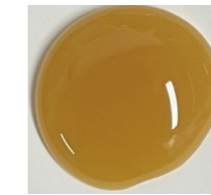
It's important for clinicians and patients both to protect against secondary caries, which can be realized by in-office and at-home protection treatments. The prevention of secondary caries includes micro crack control, fluoride use, teeth cleaning, tooth decay and gum disease treatment, and regular checkups.



Benefits at a glance

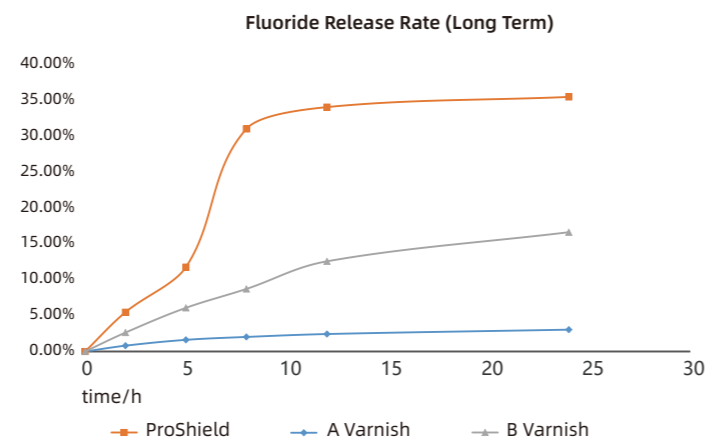
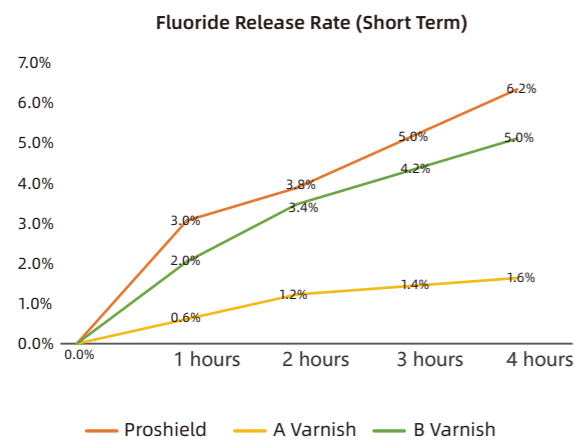


Fine and uniform particles enables a stable suspension of sodium fluoride, enhances fluorine releasing and distributing evenly.



Stable performance in long term and higher temperature resistance

- Stable and long-lasting fluorine releasing, strengthen secondary caries preventive effect.
- Strong acid-resistant mineral covers and occludes open tubules.
- Easy to apply, and sets rapidly in the presence of saliva.
- Multiple pleasant flavors.
- Offers Two different capacity options: syringe package and unit dose package, up to your operative preference



*Data from VinciSmile Lab



Order Information

Item #	Description
HugeBond-LCDA	HugeBond Universal Light Cure Dental Adhesive Universal Adhesive, 5ml* 1 bottle
PETCH	P-Etchant Phosphoric Acid Etching Gel Etchant, 3ml* 1 Syringe+10 Dispensing tips
TOPCEM-DCRC-Shade	TopCEM Dual Cure Resin Cement Cement, 8g*1 Syringe
ProShield	ProShield Fluor Protector Fluoride Varnish, 10g*1 Syringe/0.4g*1 Dose

TopCEM Dual Cure Resin Cement

Item #	Shade Description
TOPCEM-DCRC-TR	TR
TOPCEM-DCRC-A0	A0
TOPCEM-DCRC-A1	A1
TOPCEM-DCRC-A2	A2
TOPCEM-DCRC-A3	A3
TOPCEM-DCRC-White	White
TOPCEM-DCRC-Opaque	Opaque

VinciSmile is committed to becoming a reliable and all-round solution provider, brings you a professional and all-in-one TopCEM indirect restorative solution, containing etchant, adhesive, cement and all accessories you need in practice. Save your time effectively and help you achieve clinical excellence for patients.

We are making even greater strides in leading clinical education and developing product solutions that consistently help our customers achieve clinical excellence for their patients.





TopCET
Dual Cure Resin Cement
Rx ONLY CE MDD