

## Product Highlights

- No wasted shades with only one TrusFIL-Universal shade, changing your restoration routine
- Take the guesswork out of finding the accurate shades matching patients' natural teeth
- Exceptional longevity with low shrinkage of only 1.06%
- Impressive physical properties due to TrusFIL Nanofiller technology
- 3.5 mm depth of cure – Utilize 400-500 nm LED curing lights with an output of at least 800 mW/cm<sup>2</sup> for a minimum duration of 10 seconds.
- Easy to polish, highly stain resistant with a high gloss

## Multiple Indications

- Direct anterior and posterior restorations (including occlusal surfaces)
- Core Build-ups
- Splinting
- Indirect restorations including inlays, onlays and veneers

*With TrusFIL X-Blend, achieving a natural and harmonious restoration has never been easier. Experience the future of aesthetics restoration with a innovative composite that truly matches every patient.*



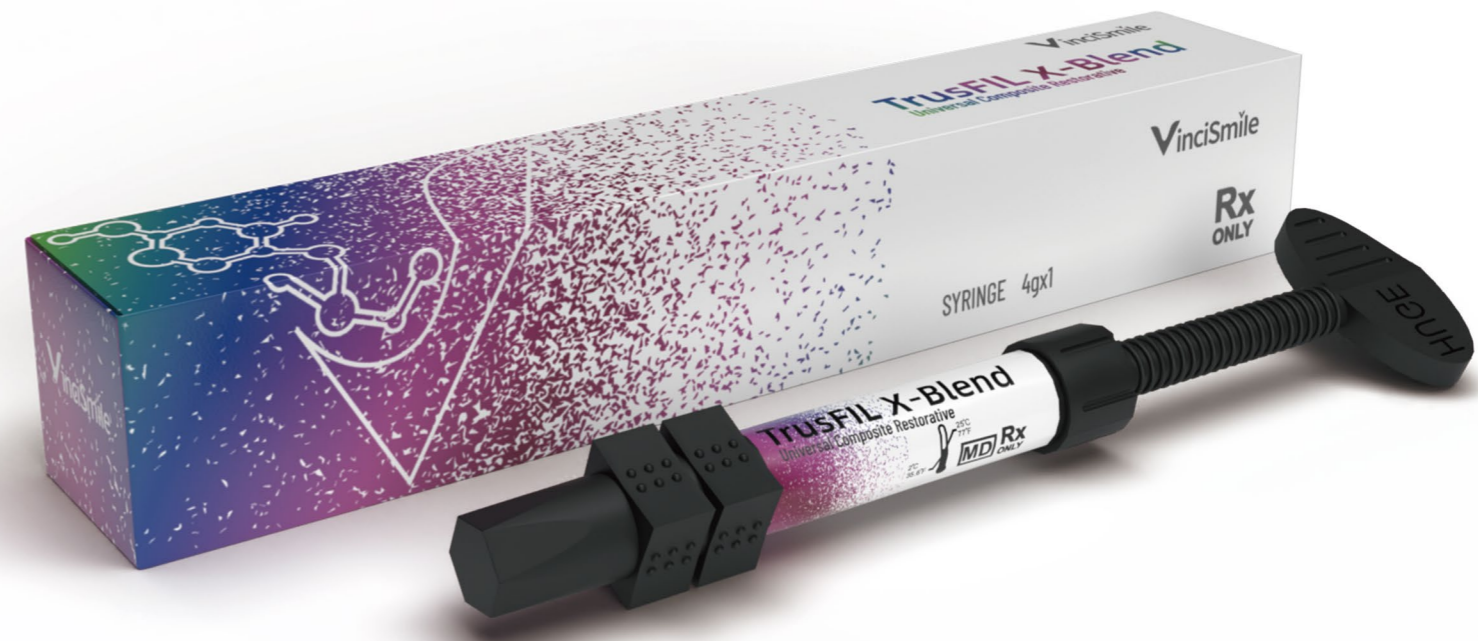
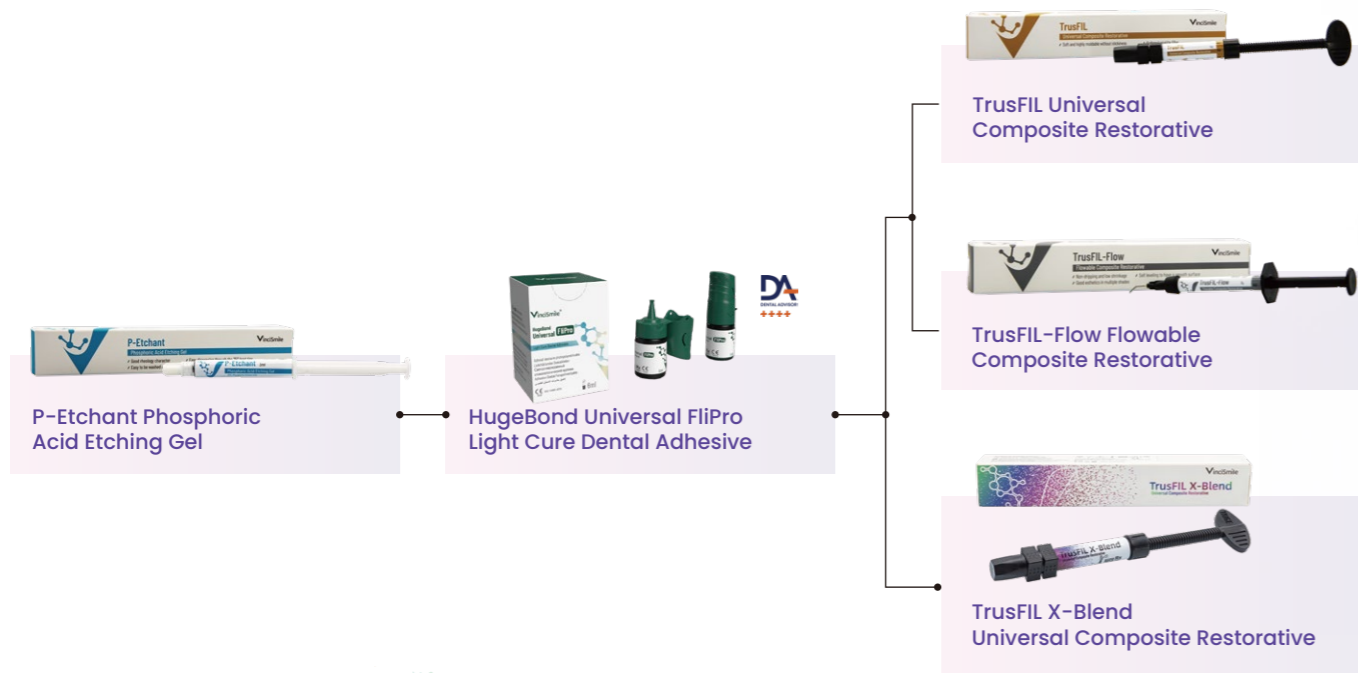
VinciSmile®

# TrusFIL X-Blend

*ONE syringe for ALL ranges of teeth shades*

## TrusFIL Direct Restorative Solution

Much Simpler, More Durable, More Smiles



*Ultimate Color-Matching Composite Restorative*

Perfectly Integrating into Your Clinical Practices



VINCISMILE GROUP LLC

Add: 20524 Carrey Rd. Walnut, CA 91789, USA

Email: [marketing@vincismile.com](mailto:marketing@vincismile.com) Tel: +1 626 283 5808

Web: [www.vincismile.com](http://www.vincismile.com) Shop with us online at [store.vincismile.com](http://store.vincismile.com)

f i y in  
Follow @VinciSmile

# Simplicity, Aesthetics & Better Longevity.....

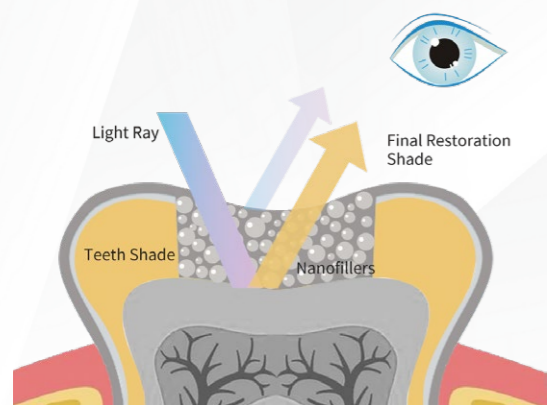
## Perfect Aesthetic Results



One single shade matches all VITA 16 shades.

## Simple Process — One Shade Fits All

**Innovative TrusFIL Technology:**  
Utilizing special fillers and innovative TrusFIL Technology, TrusFIL X-blend exhibits success in covering all shades in only ONE universal shade composite. When TrusFIL X-Blend is filled into the cavity, the colors and optical properties, the resin-covered tooth structure underneath, and the remaining exposed tooth structure all interact. That's how these factors together affect light interaction and lead to **the Chameleon Effect.**



▲ Take the guesswork out of selecting the composite shade with this innovative color-matching technique that creates the perfect match.

## Excellent Longevity

### Strengthened Properties & Color Consistency

TrusFIL X-Blend is an upgraded composite, delivers an amazing shade-matching magic without compromising strength.

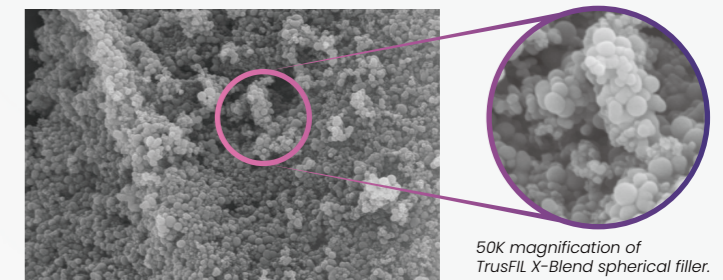
The accelerated stability tests show that the aging product still has impressive color stability after water absorption or light exposure, and has excellent staining resistance and reliable temperature stability compared to leading Composites.

Color stability	Control group	Absorb water after aging	Light exposure after aging	High temperature stability	Before 60°C for a week	After 60°C for a week	Staining resistance	Before aging		After aging	
								X-Blend	Brand A	X-Blend	Brand A
								Before stain	After stain	Before stain	After stain
	●	●	●		●	●		●	●	●	●
								●	●	●	●



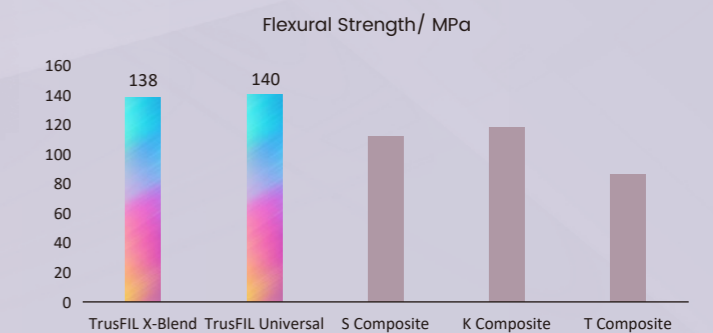
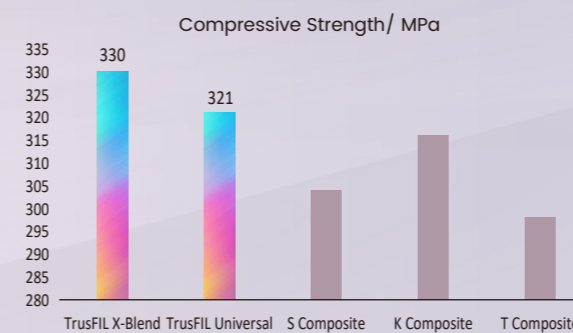
\* Data from VinciSmile dental lab.

TrusFIL's leading filler technology results in excellent physical properties and outstanding polish.



50K magnification of TrusFIL X-Blend spherical filler.

Polymerization shrinkage/ %	1.06 %
Elastic Modulus/ GPa	11.5 GPa
Water Absorption/ $\mu\text{g}/\text{mm}^3$	18.2 $\mu\text{g}/\text{mm}^3$
Solubility/ $\mu\text{g}/\text{mm}^3$	0.5 $\mu\text{g}/\text{mm}^3$
Depth of Curing/ mm	3.5 mm



▲ Compared to TrusFIL Universal, TrusFIL X-Blend shows a quite similar performance in practice, and provides an easier operation.